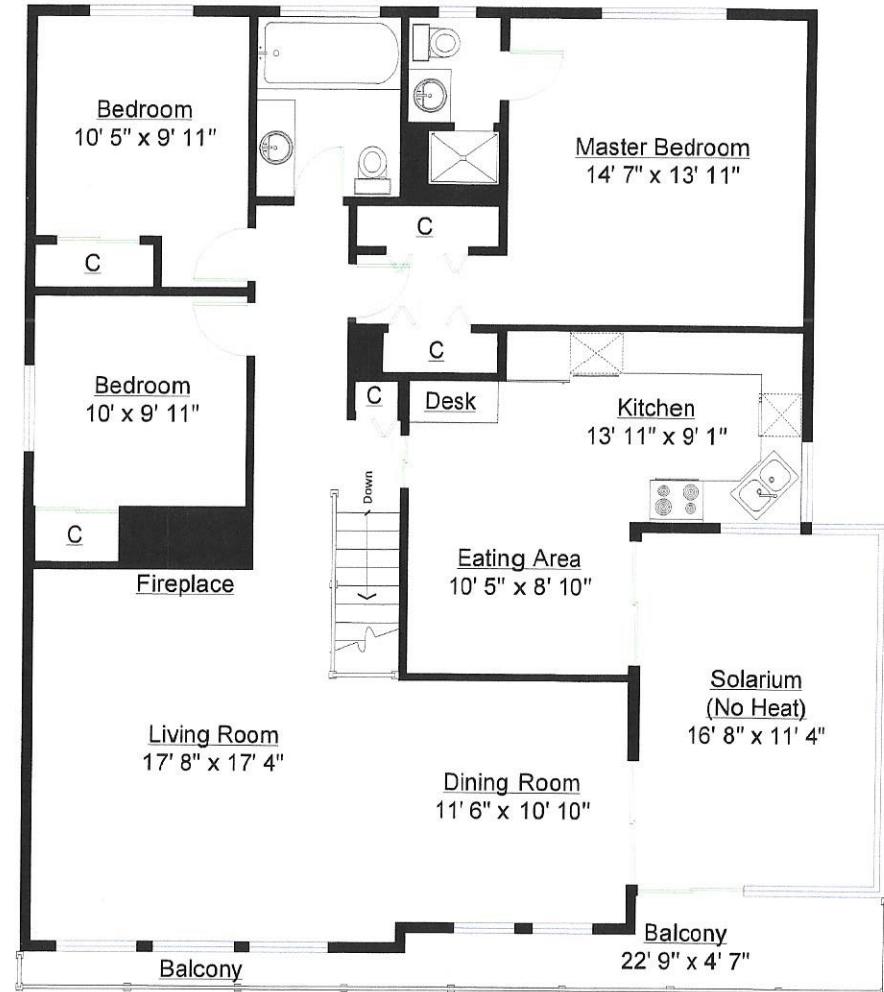
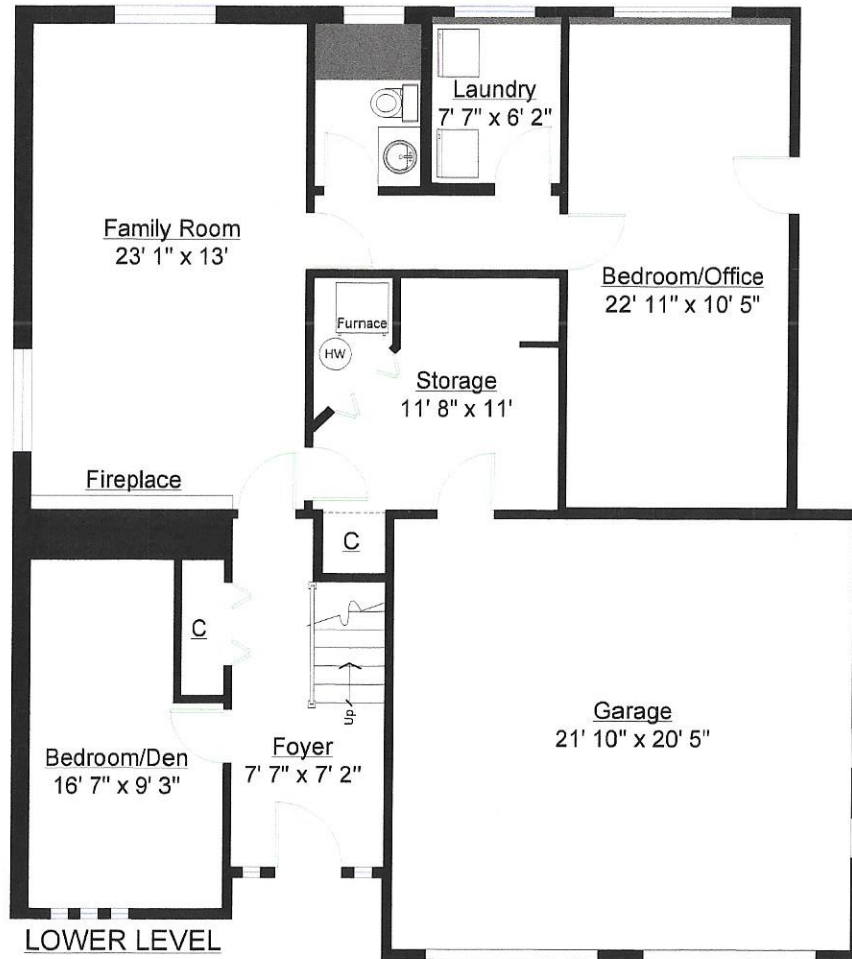




1295 Lansdowne Dr
Coquitlam, B.C V3E 1K7



Totals**
 Main Level: 1,502 sq. ft.
 Lower Level: 1,232 sq. ft.
TOTAL: 2,734 sq. ft.

Other Areas
 Balcony: 115 sq. ft.
 Garage: 471 sq. ft.
 Solarium: 205 sq. ft.
TOTAL: 791 sq. ft.

